

# LEADERSHIP VICTORIA



# BEYOND

---

An innovative program for leaders at the peak of their careers who are contemplating “what’s next?”.

# WHAT IS 'BEYOND'?

Designed for leaders who are, or are planning on, transitioning from full-time work, 'Beyond' helps you intentionally design your next life phase, leveraging your portfolio of career-long expertise and networks. It helps you explore pathways to continue to have purpose, and have meaningful impact in the community whilst staying engaged and connected.

## PROFESSIONAL DEVELOPMENT FOR THE NEXT PHASE OF YOUR LIFE

Shift your leadership mindset from career-driven success to broader contributions.

### GAIN CLARITY FOR THE FUTURE

Define your purpose and strategic direction for the next stage of your life.

### BUILD NEW NETWORKS

Forge meaningful connections with diverse yet like-minded leaders, beyond your usual circles.

### LEVERAGE YOUR EXPERTISE

Discover how to frame and apply your leadership expertise in new, impactful ways.

### EXPLORE PRACTICAL OPPORTUNITIES

Delve into board roles, mentoring, strategic volunteering, philanthropy and more.

### DISCOVER LEADERSHIP IN COMMUNITY

Engage with purpose-driven leaders and the challenges and complexities they face.

### MAINTAIN PURPOSE AND MEANING

Combine personal priorities (family, travel, health, recreation) with meaningful contributions.

MELBOURNE CBD + REGIONAL RETREATS

7 FULL DAYS, 3 NIGHTS & 5 EVENTS OVER 5 MONTHS

FROM \$8,950 +GST

# WHO IS 'BEYOND' FOR?

Leaders contemplating a move beyond full-time work often face a gap between their skills and the opportunities available to them. You know you want to continue to have purpose, but are unsure how best to apply your expertise or find new pathways to contribute. Meanwhile, society urgently needs strategic minds, problem-solvers, and experienced mentors to help navigate current and emerging complex challenges.

'Beyond' bridges that gap, giving you the tools, networks, and insights to step into your next life chapter.

## IF YOU'RE AN ACCOMPLISHED LEADER OR BUSINESS OWNER, WHO IS:

- Asking yourself "what's next?" beyond full-time work.
- Seeking intellectual stimulation and challenge in new spaces.
- Wanting to explore how you can apply your leadership skills in meaningful and impactful ways.
- Interested in gaining exposure to the challenges facing community.
- Keen to connect with a new and diverse network of leaders navigating similar transitions.

## THEN BEYOND IS FOR YOU.

**RATHER THAN VIEWING  
RETIREMENT AS AN  
ENDPOINT, 'BEYOND'  
PREPARES YOU FOR  
YOUR NEXT CHAPTER.**



# WHAT TO EXPECT

Beyond draws from the best of Leadership Victoria's renowned Williamson Community Leadership Program, but is designed for leaders at a very different life stage. Your program includes:



## 2 x Residential Immersive Retreats (2 days each)

Step away from the day-to-day and into facilitated immersive spaces that prompt deep connection, reflection and new perspectives. All meals and accommodation included.



## 3 x In-Person Experience Days

Intentionally designed days that invite curiosity, explore assumptions, and introduce you to seasoned community leaders. Lunch and refreshments provided.



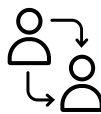
## 2 x Online Events

Maintain momentum and connection through virtual engagements that build on your in-person experience.



## Personalised Strengths Deployment Inventory (SDI 2.0) Diagnostic

A personalised, strengths-based diagnostic to help surface how you might lead and connect in new and different contexts.



## Tailored Support Through Coaching

Confidential support from a skilled practitioner to help you work through the real-time questions you're holding.



## Special Events

**Signature Dinner** (with guest): An evening of inspiration and connection, and the opportunity to include someone from your life or leadership circle.

**Leadership Lunch:** A space for meaningful conversation around leadership in practice.

**Graduation Dinner:** A celebration of the relationships and insights you have gained.

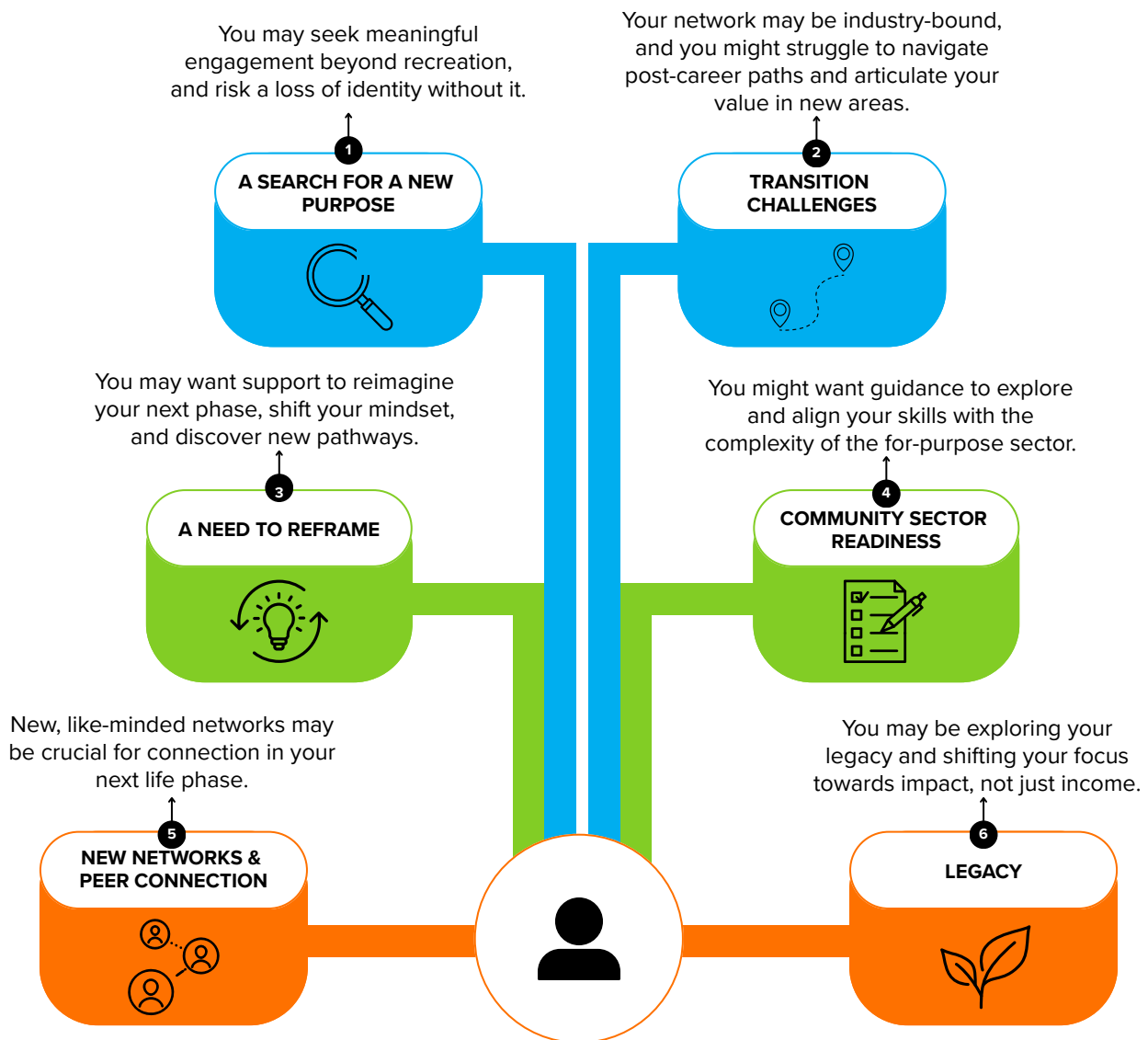
## NO HIDDEN EXTRAS - EVERYTHING YOU NEED IS INCLUDED





# WHY NOW? WHY YOU?

Without structured support, the transition beyond a full-time career and the confronting recalibration of identity, purpose and place can feel disorienting and isolating. At the same time there is so much potential for you to use your expertise to add value to the community. In the design of Beyond we have carefully considered:



**EXPERIENCED LEADERS ARE EXITING WORK AT THE PEAK OF THEIR CAPABILITY, LEADING TO A SIGNIFICANT LOSS OF SKILLS, INFLUENCE AND LEADERSHIP THAT COULD BENEFIT COMMUNITY.**

”

# YOUR EXPERT FACULTY

---

'Beyond' is designed and delivered by expert leadership development faculty and practitioners, with additional insights from guest contributors, seasoned community leaders, and leaders who have successfully and meaningfully navigated the 'beyond career' transition.



**TONY MATTHEWS (WCLP '10)**  
'Beyond' Lead Faculty

With decades of experience in the design, development and delivery of high-quality leadership and professional development programs and activities, Tony Matthews has a passion and drive for creating impactful learning experiences.

He brings extensive management and leadership experience from partnering with private, public and not-for-profit organisations, and has designed and delivered professional development experiences at senior executive to emerging leader levels. He has helped many teams and organisations to stay ahead of the curve including the Department of Premier and Cabinet, Victoria Police, ANZ and numerous local government organisations including Boroondara, Knox, Kingston, Cardinia and others.



**DEIDRE COPELAND (WCLP '98)**  
'Beyond' Mentor/Coach  
Former Senior Executive, Shell

Deidre Copeland's career has been defined by delivering exceptional results through the creation of clear and pragmatic objectives that teams can understand and rally behind, whether it's a billion-dollar divestment, a multimillion-dollar change program, or a global or local initiative.

She has led enterprise-wide process and IT programs, global customer-serving processes and performance improvement initiatives, and has established senior leadership process councils. Her experience also spans operational management, industrial relations, and large-scale and complex divestment projects.

Deidre is an accredited coach, and will support 'Beyond' participants as you explore paths to transition beyond your full-time career.



**KATHERINE ELLIS (WCLP '07)**  
'Beyond' Host  
CEO, Leadership Victoria

Katherine Ellis has decades of diverse leadership experience across the private, public and not-for-profit sectors, and a strong track record of developing leaders and connecting them to achieve collective impact.

After a 'first' career in the private sector working for a global multi-national, Katherine shifted gears to lead and grow a fledgling youth development not-for-profit, and has led a range of for-purpose organisations for the past 20+ years.

Katherine will bring to 'Beyond' her experience of the learning curve required to transition private sector skills to benefit the community sector, and the many challenges faced by for-purpose leaders today.



# KEY DATES

Month	Event	Location	Dates 2025
July	Welcome Immersive Retreat (2 days, 2 nights)	Regional Victoria (Yarra Valley)	Wednesday, 30 July (evening) - Friday, 1 August (late afternoon)
August	Experience Day 1	Melbourne	Friday, 15 August
	Leadership Lunch	Melbourne	Wednesday, 27 August
September	Experience Day 2	Melbourne	Friday, 19 September
October	Signature Dinner (with guest)	Melbourne	Wednesday, 1 October
	Experience Day 3	Melbourne	Friday, 10 October
	Online Webinar	Online	Wednesday, 22 October (early evening)
November	Closing Immersive (2 days, 1 night)	Regional Victoria (location TBC)	Thursday, 20 - Friday, 21 November
	Graduation Dinner	Melbourne	Wednesday, 26 November

# PRICING

First Movers (only 5 places) | \$8,950 + GST  
Early Bird, Not-for-profit, Self-Funded | \$9,850 + GST  
Standard | \$11,325 + GST

Payment plans available, contact us at [info@leadershipvictoria](mailto:info@leadershipvictoria) to dicuss the right option for you.

# LEADERSHIP VICTORIA

'Beyond' is delivered by Leadership Victoria (LV). We have been delivering unique programs for 35 years, including our flagship Williamson Community Leadership Program, creating a diverse network of over 7000+ Alumni.

We have deep experience in supporting leaders to take the next step in their leadership journey and mobilise them to create meaningful impact in their organisations, communities and beyond.

Leadership Victoria also partners with business, government and community organisations to co-design and deliver tailored programs for leaders at all levels, supporting organisational and systemic transformation.

For more information on 'Beyond', please contact [info@leadershipvictoria.org](mailto:info@leadershipvictoria.org) or go to [leadershipvictoria.org/beyond-program](https://leadershipvictoria.org/beyond-program).



 [www.leadershipvictoria.org](https://www.leadershipvictoria.org)

 +61 3 9070 9893

 [info@leadershipvictoria.org](mailto:info@leadershipvictoria.org)

 Level 7, 276 Flinders Street, Melbourne, 3000

  Leadership Victoria

 @LeadVic